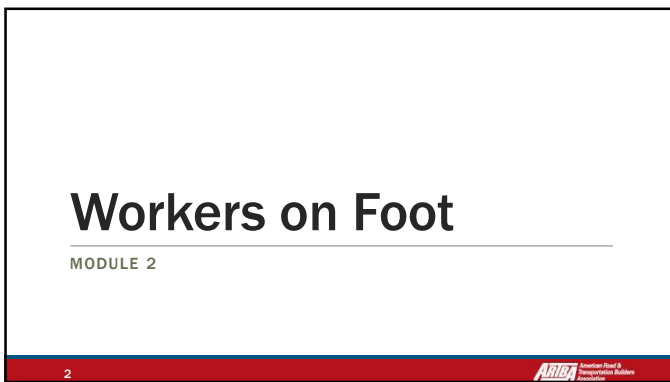
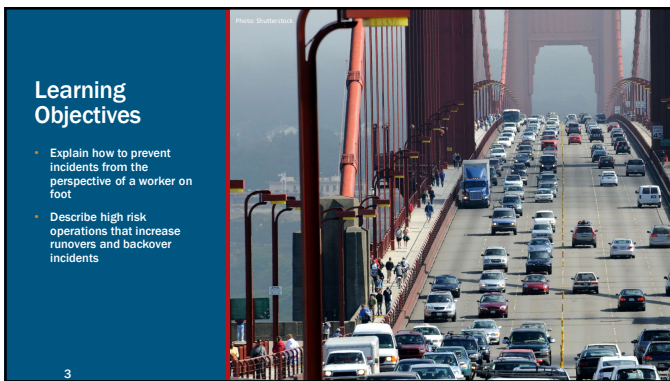




1



2



3

文明駕駛博恩 秒拍



How can we prevent this incident? – Pedestrian
It could happen in the work zone

4 ARIBA American Road & Transportation Builders Association

4

Communicate Safety Plan with Workers

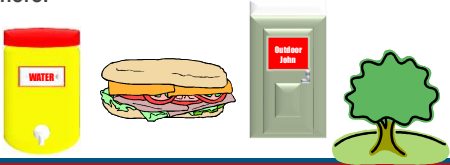


5 ARIBA American Road & Transportation Builders Association

5

Worker Habits and Behavior

Consider worker behavior when developing the ITCP. Determine locations where workers are likely to go and ensure safe routes to get there.



6 ARIBA American Road & Transportation Builders Association

6

Worker Habits and Behavior

- Consider common phone behavior:
- Plugging the ear away from the phone
 - Looking to the ground so one can concentrate
 - Trying to block out busy, noisy environment



What hazards are created?

7



7

Workers Must Be Visible

Workers must be visible with regards to their location around equipment . . .



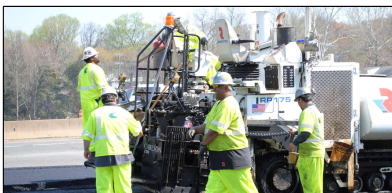
8



8

Workers Must Be Visible

Workers must be visible with regards to their high visibility clothing . . .



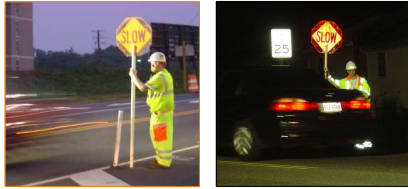
9



9

Workers Must Be Visible

Workers must be visible in a variety of conditions, especially during night work.



10



10



Blind Spots

From the cabin perspective

11

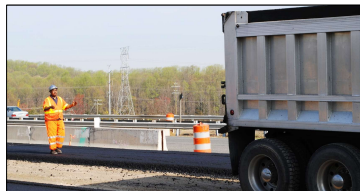
VERSION: NOVEMBER 2017



11

Workers Must Be Visible

Spotters should be used when backing is required near workers on foot.



12

VERSION: DECEMBER 2017



12

Operators Must Confirm Before Workers Approach Equipment



Wait for a clear signal from the operator before approaching equipment.

13



13

Class Activity

If you think the instructor is looking at you, raise your hand.



14

VERSION: NOVEMBER 2017



14

Awareness Test

How many passes does the team in white make?

15

VERSION: NOVEMBER 2017



15

High Risk Operations

Certain Operations Create High Risks

- When the “ordinary” changes, incidents are more likely to occur
- Trucks back more frequently
- Workers on foot are closer to equipment
- More equipment or vehicles are on-site, moving
- Repairs bring more people and equipment near moving equipment

16



16

High Risk Operations

Change from the “Routine” Increases Risk

17

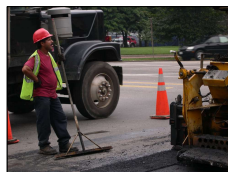


17

Mitigating Risk

Minimize movement of vehicles when workers on foot are performing change-over, repair or other tasks


Do not sacrifice safety procedures during such times.



18




18



How can we prevent this incident? – Backed Over by a Truck
Backing up operations

19

ARTBA / FHWA




19

Discussion and Questions

END MODULE TWO

20



20